

EIGHTY FORTY

FROM HERE ON IN

Proudly established on St. Clair Avenue West, in a neighbourhood steeped in culture and time-honoured traditions, Worsley Urban invites you to make yourself at home. Unlock the possibilities.

/ THE INTRODUCTION



worsley
urban

DEVELOPER'S NOTE

Located between Bathurst and Dufferin, this 9-storey building with 120 suites is the epitome of distinctive design, downtown convenience, and uptown style. With St. Clair West subway station and major highways just a short drive away, commuting is convenient and fast. And, with an abundance of neighbouring local shops, restaurants, and amenities, life on St. Clair West has never looked better.

DINO LONGO

LOCATION IS KEY

MAKE IT HOME

02 / THE NEIGHBOURHOOD



02 / THE NEIGHBOURHOOD



- | | | | |
|----|------------------------|----|----------------|
| 1 | Pizza e Pazzi | 11 | Ferro Bar Café |
| 2 | Marcello's Pizzeria | 12 | The Rushton |
| 3 | Lox & Schmear | 13 | Bar Ape |
| 4 | Koko & Co. | 14 | The Stockyards |
| 5 | May Flowers | 15 | Baker & Scone |
| 6 | Moksha Yoga St. Clair | 16 | Rocket Cycle |
| 7 | Emma's Country Kitchen | 17 | Leah's |
| 8 | Nodo | 18 | Wychwood Barns |
| 9 | Roast Fine Foods | 19 | Dutch Dreams |
| 10 | Krave Coffee | 20 | Booyah |

MAP

MAP



WYCHWOOD BARNS

NEIGHBOURHOOD HIGHLIGHT
76 Wychwood Ave.

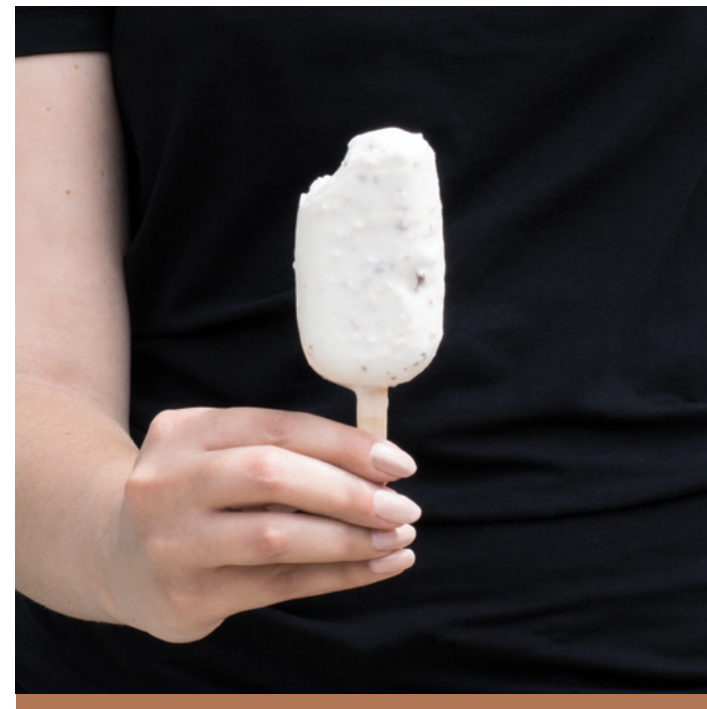
The Artscape Wychwood Barns is a cultural hub and event space which hosts a variety of gatherings relating to art, culture, environmentalism, and urban agriculture.



LEAH'S

CAFÉ & BAKERY
621 St. Clair Ave. West

There is nothing cookie-cutter about Leah's Café & Bakery. Indulge your sweet tooth at this neighbourhood hot spot that serves traditional baked goods with a modern touch.



BAR APE

ICE CREAM SHOP
283 Rushton Rd

What started out as a small gelato truck, has now become a neighbourhood gem. With a variety of signature gelato bars, it is certain to keep you coming back for more.



KRAVE COFFEE

COFFEE SHOP

781 St. Clair Ave. West #2

Stop in for a quick lunch, or get lost in a good book for hours on their rustic patio. Any time at this quaint café is time well spent.



LOX & SCHMEAR

RESTAURANT

1030 St. Clair Ave. West

No one can say no to Montréal-style bagels. Even for those with food sensitivities, Lox & Schmear has your back with a gluten-free option. Bon-appétit.



MOKSHA YOGA

WELLNESS

934 St. Clair Ave. West

Sweat it out in one of several hot yoga classes offered at Moksha Yoga and connect with other fitness enthusiasts in the community.

HOME SUITE HOME

A DETAILED LOOK INTO THE SUITES

With nine-foot ceilings, European-style cabinets, designer finishes, and thoughtfully designed floor plans, each suite maximizes usable living space in a way that's both comfortable and contemporary. Detailed craftsmanship and modern architecture are the key to each Eight Forty suite design.



THE INTERIOR SUITES

WHERE MORE
IS MORE

04 / THE AMENITIES



Renderings are artist's
concept only. E. & O.E.



/ THE INTERIOR AMENITY SPACE



Renderings are artist's concept only. E. & O.E.

THE EXTERIOR AMENITY SPACE

AND THEN SOME

Whether you're celebrating a special occasion, having a weeknight dinner outdoors, or just need a change of scenery, Eight Forty's terraces, party room and exterior amenity space meet all your needs—and then some. Host guests in a spacious party room with extra seating and a fully-equipped large kitchen, or simply have an intimate BBQ on your private terrace. Whatever the space, make yourself at home.





DRIVEN BY DESIGN

Founded by developers Dino Longo, Worsley Urban is committed to delivering quality boutique residential developments within urban communities. Worsley prides itself on pushing the design boundaries and combines traditional and contemporary architecture that complement surrounding neighbourhoods.



worsley
urban



worsley
urban

eightforty.ca